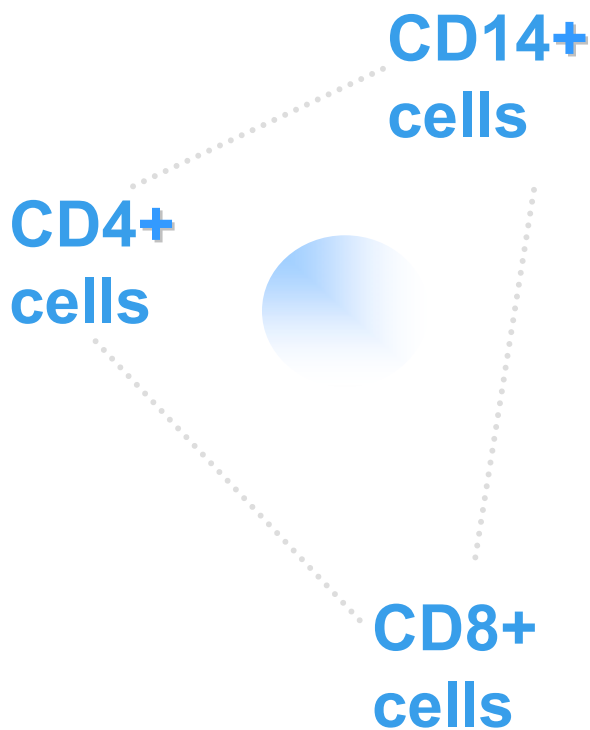


NEW

"Cell-Adembeads for cell separation"



**For positive selection
and depletion**

Effective: Optimal purity
and recovery.

Convenient: suitable with
current column based system

**Flow Cytometry
compatible**

**Gentle cell separation
system:** cell integrity is
conserved

ademtech

Cell-Adembeads Superparamagnetic nanoparticles

Successful isolation of T Cells

CD8 cells

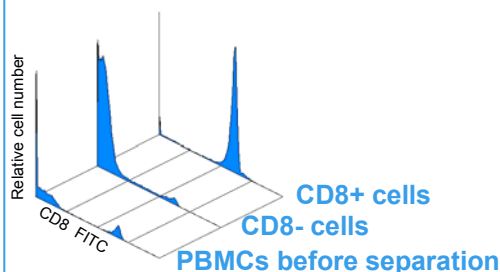


Figure 1 : Separation of CD8+ cells using CD8 Cell-Adembeads

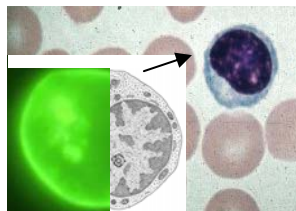


Figure 2 : T cell

CD4 cells

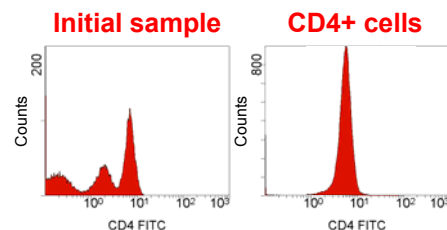


Figure 3 : Separation of CD4+ cells using CD4 Cell-Adembeads

Successful isolation of Monocytes

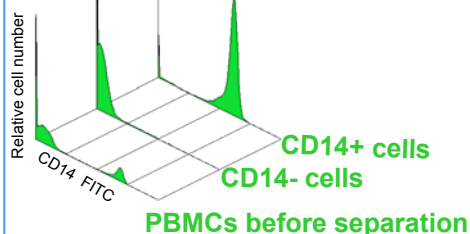


Figure 1 : Separation of CD14+ cells using CD14 Cell-Adembeads

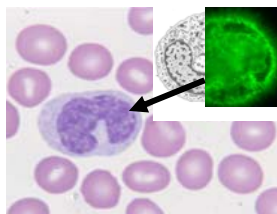


Figure 2 : Monocyte

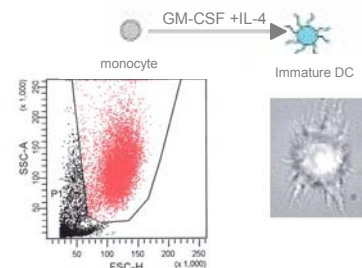


Figure 3 : Immature dendritic cells derived from monocytes: CD14+ monocytes were enriched from human peripheral blood mononuclear cells with CD14 Cell-Adembeads. The isolated monocytes were then cultured for 7 days in culture medium supplemented with GM-CSF and IL-4.

Ordering Information

Product	Size	Code Number
CD4 Cell-Adembeads	1x10 ⁹ cells	08010
CD8 Cell-Adembeads	1x10 ⁹ cells	08020
CD14 Cell-Adembeads	1x10 ⁹ cells	08030

ademtech



ISO 9001 Certified

ADEMTECH SA
Parc Scientifique Unitec 1
4 allée du doyen George Brus-33600 Pessac-France
Tel:+33(0)5 57 02 02 01 Fax:+33(0)5 57 02 02 06
ademtech@ademtech.com - www.ademtech.com