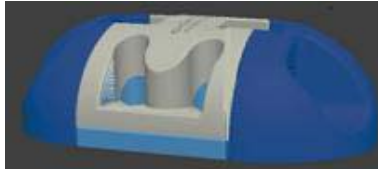


## Adem-Mag Magnetic Devices

### **MODULO Classic** Catalog # 20105



### **MODULO Brick** Catalog # 20108



Sample holder Magnetic base  
Steel rod (7 units)

ADEMTECH SA  
Parc Scientifique Unitec 1 ;  
4 Allée du Doyen Georges Brus ;  
33600 Pessac  
France

Tel : +33 (0)5 57 02 02 01  
Fax : +33 (0)5 57 02 02 06  
E-mail : [ademtech@ademtech.com](mailto:ademtech@ademtech.com)

## Product Description

### **MODULO Classic** Catalog # 20105

The Adem-Mag MODULO magnet offers a high energy neodymium-iron-boron [Nd-Fe-B] configuration.

Hold: 4 x standard 1.5ml or 2ml  
Microtubes.

Working volume: 10-2000 $\mu$ l

The magnet is ergonomically designed and offers a good visibility of your samples and separation. The sample holder can be quickly removed from the magnetic base. You can perform your entire experiment on the device, just removing the sample holder to resuspend the beads.

For more flexibility, you can build your own customized magnet using **MODULO Brick**. **MODULO Brick** can be easily connected in order to constitute a rigid assembly with appropriated dimensions (see building instructions).

## Warning and Handling

This product generates a magnetic field:

- keep away from other magnetic devices.
- people with pacemakers should avoid direct contact.
- credit cards, tapes and disks can be erased: keep away from this product.

This product is assembled with an injection model plastic: do not try to disassemble it or it may not work properly.

Correct handling is required to avoid any injury.

Product should be stored in a cool dry environment and should be cleaned with a damp cloth and mild detergent when exposed to harsh solvents. Do not autoclave.

# Building Instructions

Customized your own magnet!

